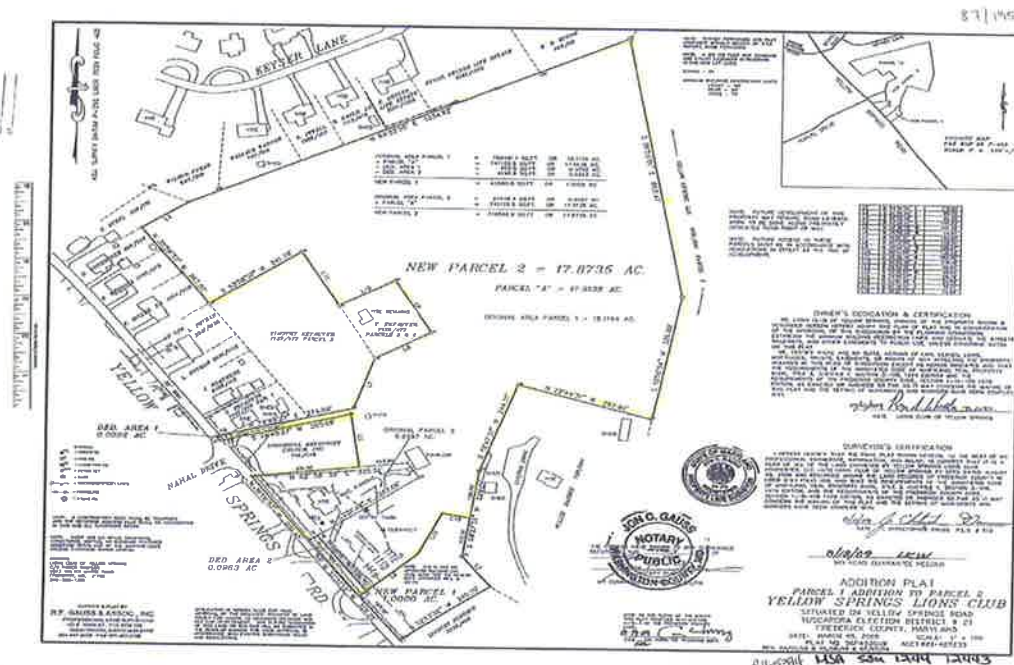


Lions Club Property—8829 Yellow Springs Rd Property is Zoned RC and RI



Sue Chapin, Associate Broker

Chapin & Associates

329A East 2nd Street, Frederick, MD 21701

Office: (240) 436-6200 x102 Cell: (301) 514-6054

email: sue@suechapin.com

www.suechapinrealtor.com or www.realestateinfrederick.com



Local Knowledge. Quality Service.



**PROPERTY IS ZONED Both RC and RI.
RI (25000 sq. ft. where building is located to the street).
The remainder of property is zoned RC.**

RI zoning permits:

Agricultural Activities
Apiary (Collecting hives or colonies of bees for their honey)
Agritourism Enterprise
Forestry
Single Family Detached (or with Home Office)
Duplex Dwelling
2 Family Dwelling
Civic Service Club

RI PS: Subject to site development plan/approval

Limited Roadside Stand
Commercial Roadside Stand
Cemetery or Memorial Gardens
Civic Community Center
Large Group Home
Assisted Living Facility
Nursing Home
Place of Worship
Private School
Community Fire and Rescue
College or University
Public School

RI Special Exceptions:

Limited Agricultural Activity
Accessory Apartment
Bed & Breakfast
Child Care/Nursery
Non Governmental Utility

RC zoning permits:

Agricultural Activities
Apiary (Collecting hives or colonies of bees for their honey)
Nursery Wholesale
Limited Roadside Stand
Farm Winery
Farm Brewery
Forestry
Single Family Detached (or with Home Office)

Mobile Homes
Group Homes (small private)

RC PS: Subject to site development plan/approval

Nursery Retail
Commercial Roadside Stand
Farm Winery Tasting Room
Farm Brewery Tasting Room
Caretaker Residence in conjunction with permitted use
Bed & Breakfast

RC Special Exceptions:

Sawmill
Spring Water Harvestry & Storage
* Accessory Apartment
* Communicative Towers
Country Inn
Agricultural Products Processing
School Bus Parking
Shooting Range/Club—Trap, Skeet, Rifle, Archery
Tent Campground
Rustic Retreat/Camp/Outdoor Club
Places of Worship
Non Governmental Utility