

Route 194 & 550

Woodsboro, MD

LAND FOR SALE

REDUCED



\$475,000

- ★ ±15 Acres
- ★ Zoned MM (Mineral Mining)
- ★ Railroad Tracks along Western Perimeter
- ★ Wooded Lot
- ★ House on Property
- ★ Multiple potential good access points along Rte. 194
- ★ Located on major commuter route

Dave Chapin 240-436-6200 ★ Doug Chapin 301-788-4039

www.realestateinfrederick.com ★ www.chapincommercial.com

329A E. 2nd St. • Frederick, MD 21701

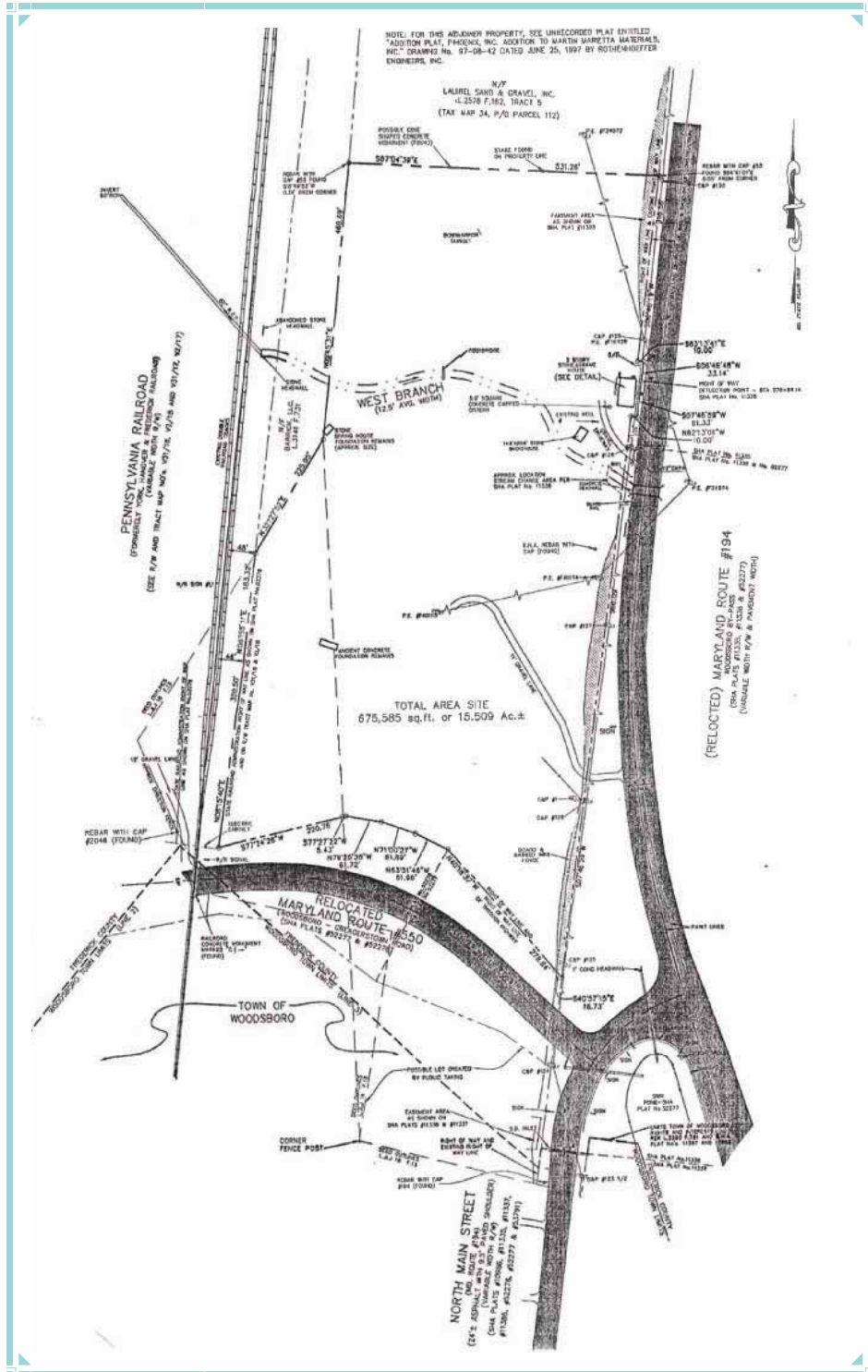
Main Office 240-436-6200



Local Knowledge. Quality Service.

ALL INFORMATION DEEMED RELIABLE BUT NOT GUARANTEED

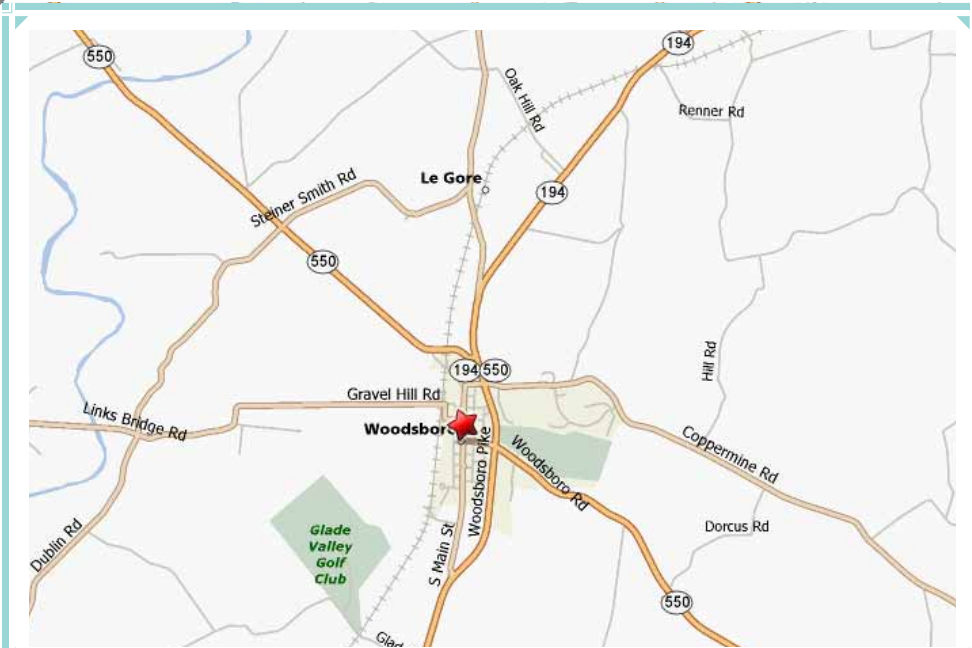
Route 194 & 550 Woodsboro, MD



ALL INFORMATION DEEMED RELIABLE BUT NOT GUARANTEED

Route 194 & 550

Woodsboro, MD



ALL INFORMATION DEEMED RELIABLE BUT NOT GUARANTEED